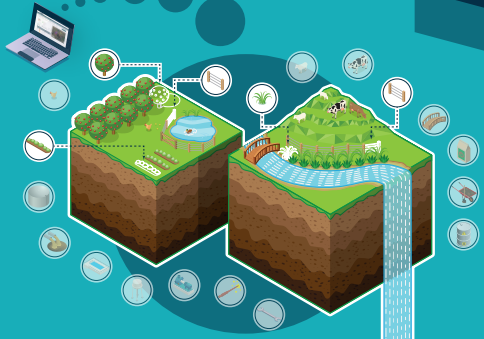


Only
\$199
(excl GST)
per annum



QCONZ
FreshWater
Farm Plan

FWFP

Build your own plan to
meet regulatory
requirements and manage
environmental risk

FWFP system for
farmers and growers

The screenshot shows the QCONZ FreshWater Farm Plan (FWFP) software interface. At the top, it says "Test Farm - SINGLE ENTERPRISE (Crops)". Below this is a navigation bar with tabs: "Boundary", "My Farm, Land and Community", "Farm Maps, Infrastructure and Actions", and "Summary". The main content area is divided into several sections:

- Outline:** A satellite map showing a farm boundary in red.
- My Farm:** A checklist with the following items:
 - 1. BARRIERS: Are a shared barrier, fence or setback, etc in place. (2/3)
 - 2. Click icon then Map to add boundaries
 - 3. LAND USE: Select if your farm is for a large land use, multi enterprise or for food production
 - 4. ZONE LEVEL: 2/3
- Table of Actions:**

ID	Due Date	Name	Action Title	Applies To	Action	Category	Requirement	View
305	20/05/2024	Farm Centre	Monitor surrounding thoughts, located above waterway or stream	Secondary Crop Area	Regulatory	plan 238	Yes	
487	23/07/2024	Farm Centre	Consider installing setbacks or bridges at Spanning Operations Area	Spanning Operations Area	Supplemental	?	Yes	

Below the table, there is a **RISK** section with a warning: "Critical Source Areas are present on farm: Critical Source Areas (CSAs) are defined for farms that can accumulate and convey water and contaminants to waterways, especially when the CSA has connectivity with a waterway. CSAs are common on farms and it is important to identify and manage them, particularly those located on high-rising and undulating land. CSA user insights"

On the right side of the screenshot, there is a section titled "Action Due - next 5 year" with a bar chart showing the number of actions due in 2024 (\$199K), 2025 (\$199K), and 2026 (\$495K). Below the chart, it says "Total Estimated Improvement Actions Cost \$177".

The QCONZ FreshWater Farm Plan (FWFP) tool is designed for farmers and growers to build a freshwater farm plan using a step-by-step guide.

The FWFP system has been designed to include feedback from multiple sources, including the Ministry for the Environment (MfE), and is current with the latest freshwater farm plan regulations.

Benefits and Features

- Affordable - \$199 (excl GST) per annum
- Build your plan following the step-by-step guide
- User-friendly farm mapping feature that integrates Google Maps technology
- Simplifies management of risks and actions
- Generates your plan automatically after completion
- Unlimited users per farm
- Compatible with other systems

A digital tool for farmers and growers to build a freshwater farm plan

View a demonstration video
freshwaterfarmplan.co.nz



Contact:
admin@qconz.co.nz
0800 726 695

